

Understanding Variation

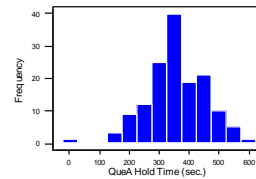
For A Point In Time

Over Time

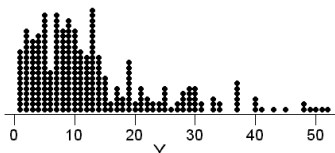
Continuous
 Measure
 Discrete

- **Histograms**

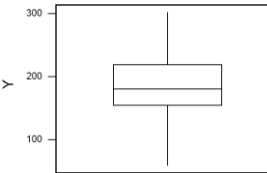
Graph > Histogram
 or
 Stat > Basic Statistics > Display ...
 and click on **Graphs...**



Dotplot for CycleTime



Boxplot



- **Dotplots**

Graph > Dotplots

- **Boxplots**

Graph > Boxplot

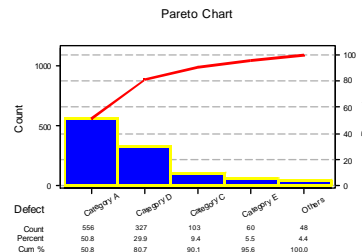
- **Tables**

Stat > Tables > Tally...

Category A	556
Category B	48
Category C	103
Category D	327
Category E	60

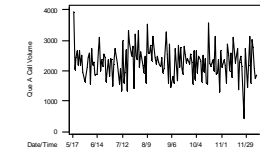
- **Pareto Charts**

Stat > Quality Tools > Pareto...



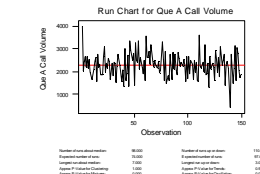
- **Time Series Plots**

Graph > Time Series Plot



- **Run Charts**

Stat > Quality Tools > Run Chart



- **Control Charts**

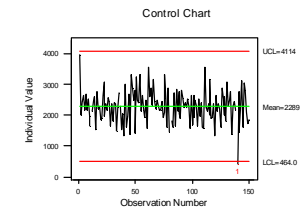
Stat > Control Charts >

- **Individuals**

Variables Charts for Individuals

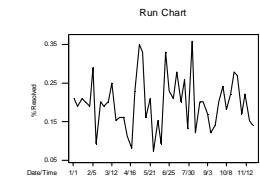
- **X-bar & R**

Variables Charts for Subgroups



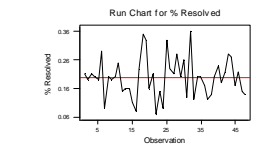
- **Time Series Plots**

Graph > Time Series Plot



- **Run Charts**

Stat > Quality Tools > Run Chart

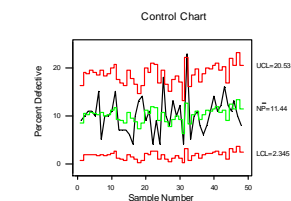


- **Control Charts**

Stat > Control Charts > Attribute Charts

- **np or p**

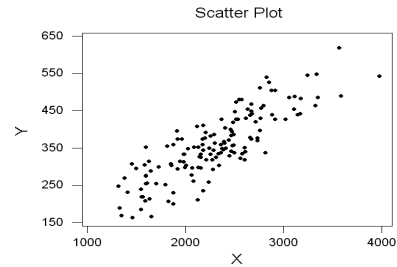
- **c or u**



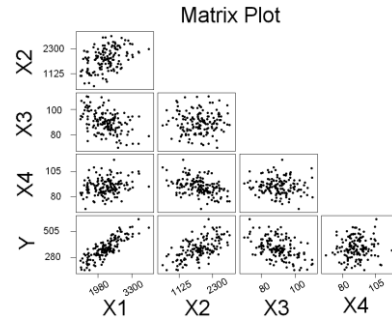
Understanding Relationships

C
o
n
t
i
n
u
o
u
s

- **Scatter Plots**
Graph > Scatterplot

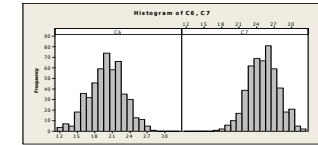


- **Matrix Plots**
Graph > Matrix Plot



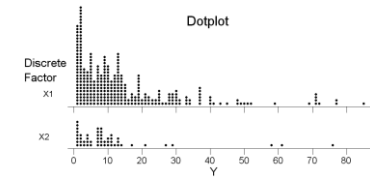
- **Histograms**

Graph > Histogram > Simple
click "Multiple Graphs"



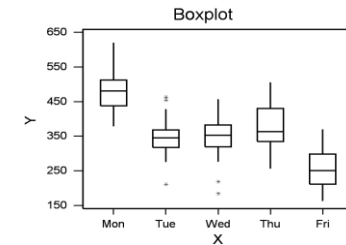
- **Dotplots**

Graph > Dotplot



- **Boxplots**

Graph > Boxplot

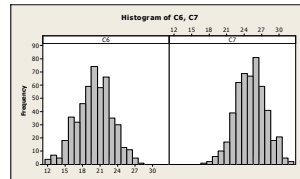


Y

D
i
s
c
r
e
t
e

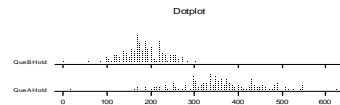
- **Histograms**

Graph > Histogram > Simple
click "Multiple Graphs"



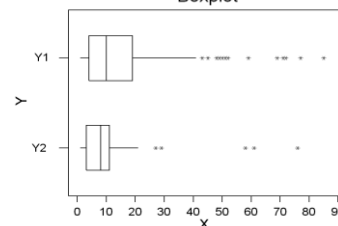
- **Dotplots**

Graph > Dotplot



- **Boxplots**

Graph > Boxplot > Multiple Y's
Click on "Scale" and select
"transpose value and category scales"



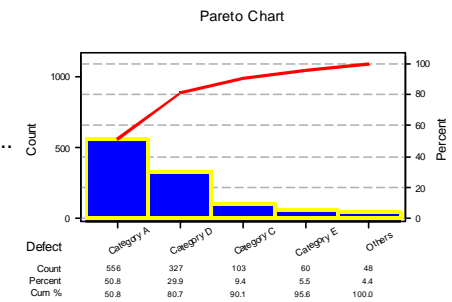
- **Tables**

Stat > Tables > Tally...

Category A	556
Category B	48
Category C	103
Category D	327
Category E	60

- **Pareto Charts**

Stat > Quality Tools > Pareto..



Continuous

Discrete

X